

# MAILI®

Harnessing the power of the world's first OxiFree™ technology, the innovative HA filler brings an exclusive combination of unparalleled projection power and supreme suppleness.

A range of 4 variants incorporating lidocaine designed for gifted professionals to refine their craft with precision and care.

CE2797: MaiLi devices are intended for the correction of facial wrinkles or folds, for the definition or enhancement of the lips, and for the restoration or enhancement of the facial volume. MaiLi is also indicated for scar tissue treatment and volume lost by HIV-associated lipoatrophy.

MA-DLM-042021-A

 **SINCLAIR**

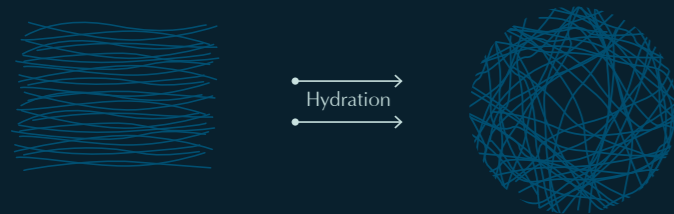
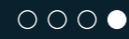
# MaiLi's OxiFree™ Process

The benefits of the technology:

Reduces the amount of chemical cross-linking required

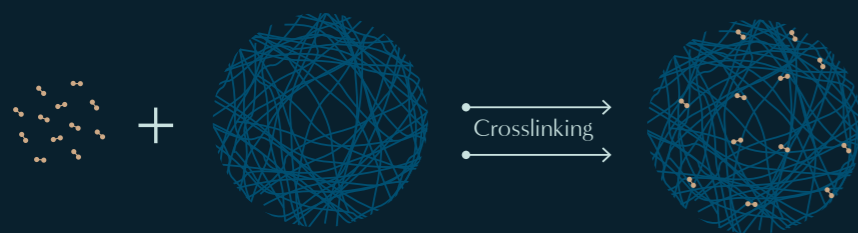
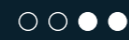
Protects the HA network from degradation

## Hydration



High molecular weight, long HA chains are dissolved to form a solution through a hydration system

## Crosslinking



Crosslinking under inert atmosphere is performed with low levels of BDDE – transforming the solution into a gel

## Extraction



Reactive oxygen species are removed from the gel to better preserve the lightly-crosslinked HA network

## Sterilisation



The OxiFree™ crosslinked HA network (containing less reactive oxygen species) is better preserved during sterilisation

MAILI™

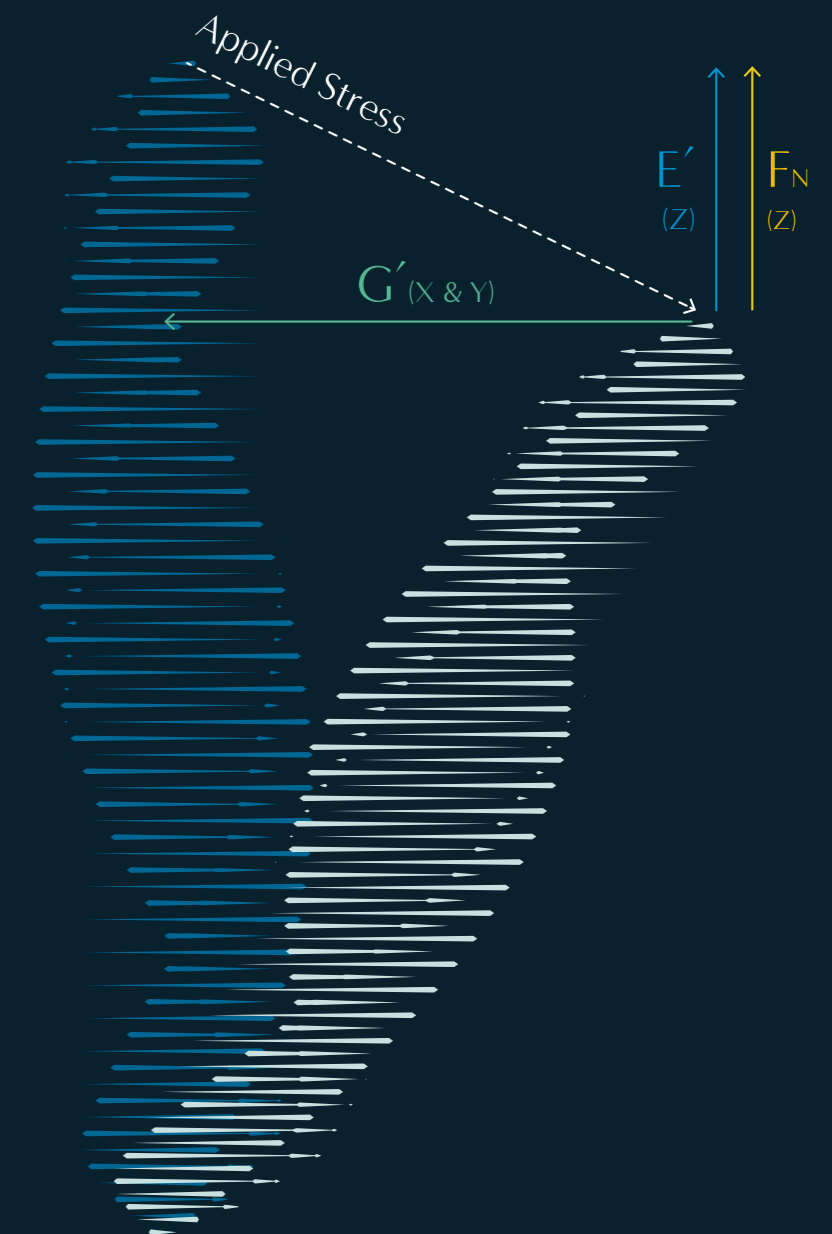
## Combined Forces



OxiFree™ creates a uniquely supple gel with springlike qualities. Smart Spring Science describes these properties – a gel that responds exceptionally well to pressure, while working flexibly with natural movement and dynamic expression.

Smart Spring Science offers a supreme combination of product benefits:

1. Great volumising effect (24% less gel required for similar outcome\*)
2. A supple, springlike gel allowing for natural-looking effect
3. A long-lasting effect (at least 12 months\*\*, including in lips)

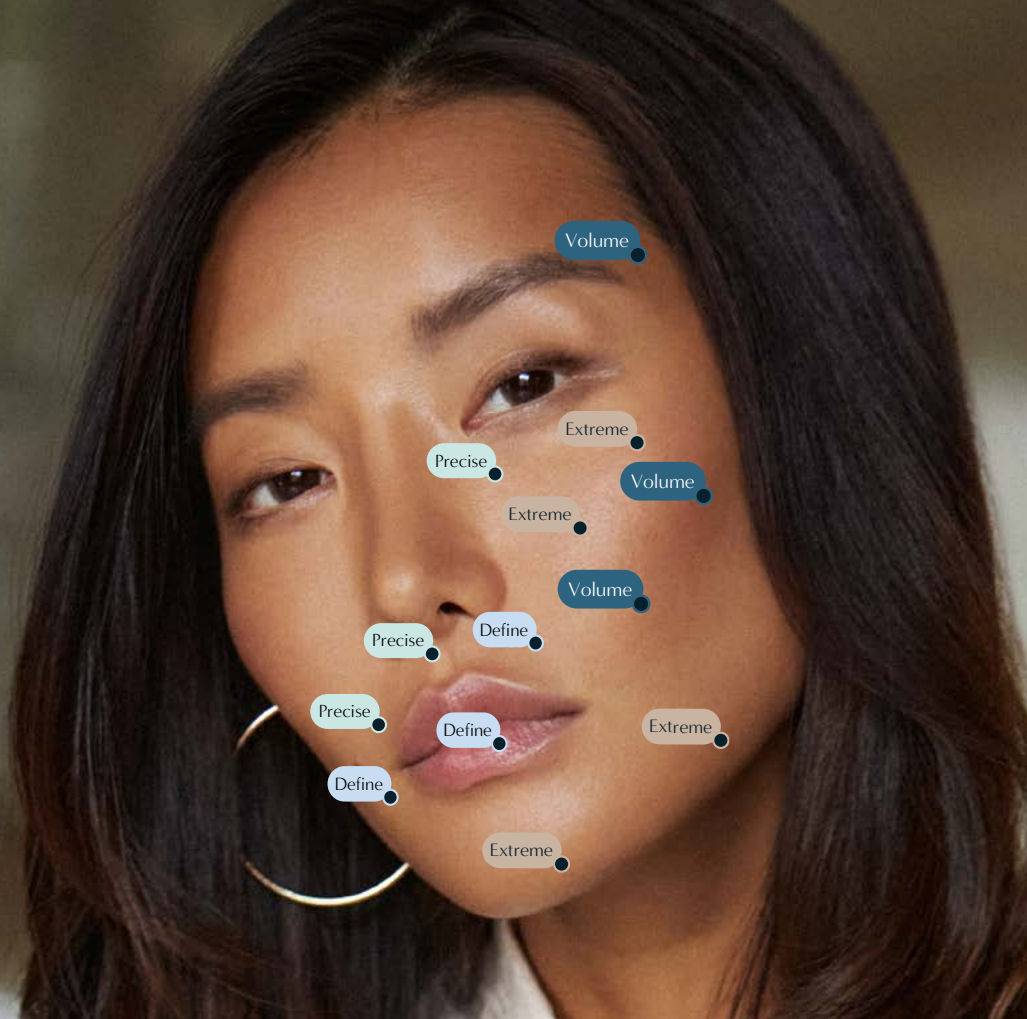


\* Clinical investigation 17E1176: in comparison to Juvederm® Voluma, 24% less product of MaiLi Extreme was injected for the same results in the treatment of the cheek area.

\*\*Data on file.

## MAILI

Discover the versatile MaiLi range of four expertly-crafted gels, each fine-tuned to reshape, refine and enhance most areas of the face, whilst integrating lidocaine for a more comfortable experience.



Precise	Define	Volume	Extreme
<b>Treatment Goal</b> Specifically designed to treat fine lines with long-lasting effects	<b>Treatment Goal</b> Ideal for filling deep wrinkles and restructuring the lips	<b>Treatment Goal</b> Designed for facial volumising and subdermal fat pad injection	<b>Treatment Goal</b> The most powerful of all MaiLi products, created to sculpt and shape the face
<b>Indications</b> Facial reconstruction of structural defects from congenital or medical origin: scar tissue  Aesthetic treatment of fine-lines, medium-sized skin depressions  Lip definition or enhancement  Periorbital area (tear trough)*	<b>Indications</b> Facial reconstruction of structural defects from congenital or medical origin: scar tissue  Aesthetic treatment of deep skin depressions  Lip enhancement	<b>Indications</b> Facial reconstruction of structural defects from congenital or medical origin: volume lost by HIV-associated lipoatrophy  Aesthetic treatment of deep skin depressions at the level of the face  Augmentation of the volume of facial tissues	<b>Indications</b> Facial reconstruction of structural defects from congenital or medical origin: volume lost by HIV-associated lipoatrophy  Aesthetic treatment of facial volume restoration  Augmentation of the volume of facial tissues  Adapted for supraperiosteic injection and volume restoration
HA concentration 15 mg/ml	HA concentration 18 mg/ml	HA concentration 21 mg/ml	HA concentration 24 mg/ml
Lidocaine content 3 mg/ml	Lidocaine content 3 mg/ml	Lidocaine content 3 mg/ml	Lidocaine content 3 mg/ml
<b>Injection depth</b> Dermis or intra/sub-dermal or between mucosa and muscle	<b>Injection depth</b> Deep dermis, sub-dermal or between mucosa and muscle	<b>Injection depth</b> Subcutaneous fat tissue or supraperiosteic zone	<b>Injection depth</b> Subcutaneous fat tissue or supraperiosteic zone
Needles per box 4 x 30G	Needles per box 4 x 30G	Needles per box 4 x 27G	Needles per box 4 x 27G
Individually packed syringes 4 x 1 ml	Individually packed syringes 4 x 1 ml	Individually packed syringes 4 x 1 ml	Individually packed syringes 4 x 1 ml

\* MaiLi Precise is reserved to specialists specifically trained in the injection technique and who have sound knowledge of the anatomy and physiology of this periorbital area.